

Vacant on Transfer | Full Sea & Atlantis View

Palm Jumeirah Apartment

AED 6,250,000
Ready

Apartment
3 bedrooms
4 bathrooms
2,271 built square feet

Listed by
Lyndsey Redstone
Knight Frank
971505583919



About this property

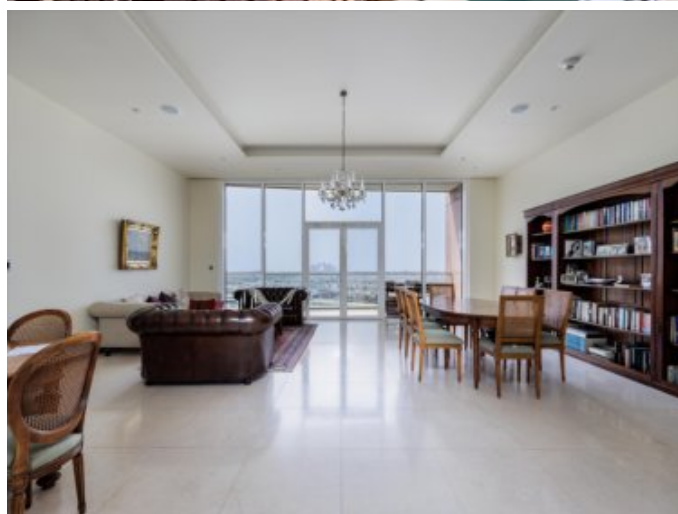
Knight Frank is proud to present this spacious 3 bedroom apartment in Emerald, Tiara, Palm Jumeirah. Offering panoramic views of sea and Royal Atlantis, the apartment is located on a high floor. Residents of Tiara Residence can enjoy private beach, infinity pool, 5* Gymnasium facilities and restaurants of Andaz Hotel.

Features:

- 3 Bedrooms - 4 Bathrooms - BUA 2266 sq ft - Sea view - Large balcony - Storage and laundry room - Study/office - 2 assigned parking bays - Vacant on transfer

The Palm Jumeirah is among the most exclusive communities in Dubai. This man-made beachfront development is known as an oasis for the rich and famous, as well as an amazing family-friendly home for an array of residents. It is the world's largest man-made island spanning over 78 km of waterfront property to the Dubai coastline. The island is known for its tourism, leisure, and retail options. It appeals equally to the residents and visitors, creating a spectacular, world-renowned residential and tourism destination.

If you would like more information or to arrange a viewing, please contact Irina, our Knight Frank Palm Jumeirah Specialist



Contact us about this property

LUXHABITAT

Palm Jumeirah Apartment
AED 6,250,000

Property representative
Lyndsey Redstone
Knight Frank
971505583919
knightfrank.knight_frank_middle_east@ptlp.co.uk



View on luxhabitat.ae/ref/DUB012234457

