

Beach Access|Palm View |Rented

Dubai Harbour Apartment

AED 2,690,000
Ready

Apartment
1 bedrooms
2 bathrooms
799 built square feet

Listed by
Fabio Lombardi
Engel & Völkers Dubai
+97144223500



About this property

Engel & Voelkers is honored to present this amazing one bedroom apartment facing Palm Jumeirah and has a lovely sunset view.

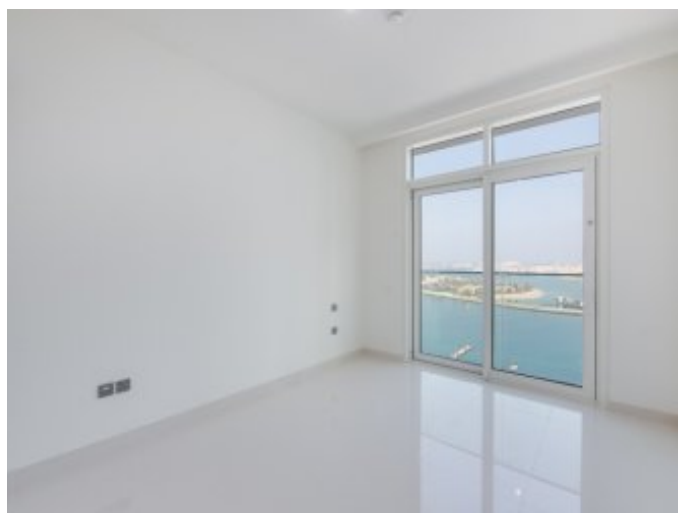
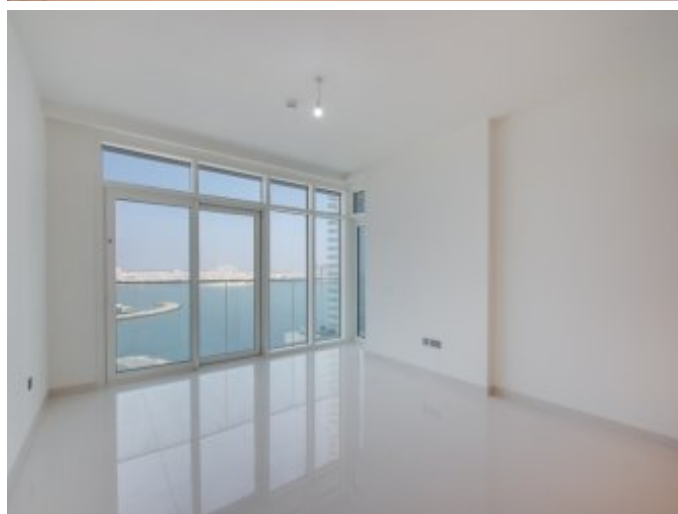
Property Details:

-Great finishing it has an open plan kitchen, spacious living area and large balcony. -Full Palm and Sea View - Rented at 150k -Luxury Development -Beach Access

Sunrise Bay at Emaar Beachfront is a premium twin tower of 26 stories set only a few steps away from the glimmering bay and the vibrant marina, which comprise one, two, three, and four-bedroom apartments, each promising breath-taking sunrise views. The physical and perceptually architecture of the building connects the mainland to the blue water. The beautifully crafted building, inspired by modern yacht culture, blends artfully with its beachfront setting.

Engel & Voelkers is one of the world's leading service companies specializing in the brokerage of residential and commercial properties, yachts and aviation, with 1000 offices in over 30 countries.

Contact Engel & Voelkers today for further details



Contact us about this property

LUXHABITAT

Dubai Harbour Apartment
AED 2,690,000

Property representative
Fabio Lombardi
Engel & Völkers Dubai
+97144223500
dubai@engelvoelkers.com



View on luxhabitat.ae/ref/RL3648

